



Italian Tile & Stone
tiles.ie

SHIPYARD

www.tiles.ie

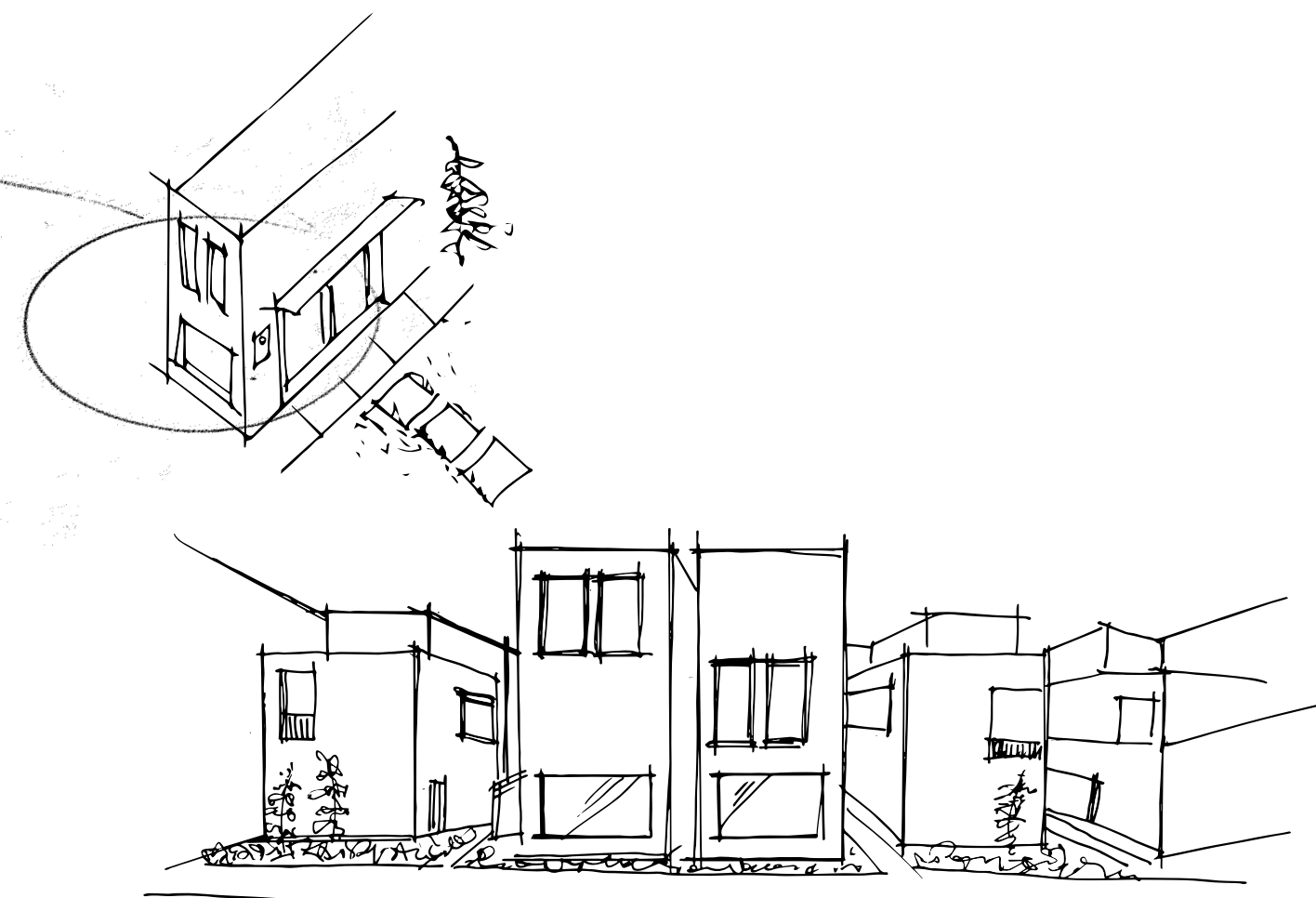


SHIPYARD

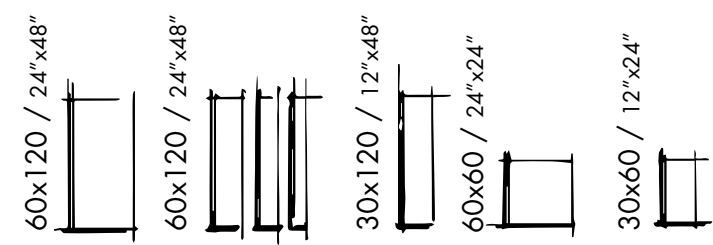
THE EVOLUTION CONTINUES

SHIPYARD

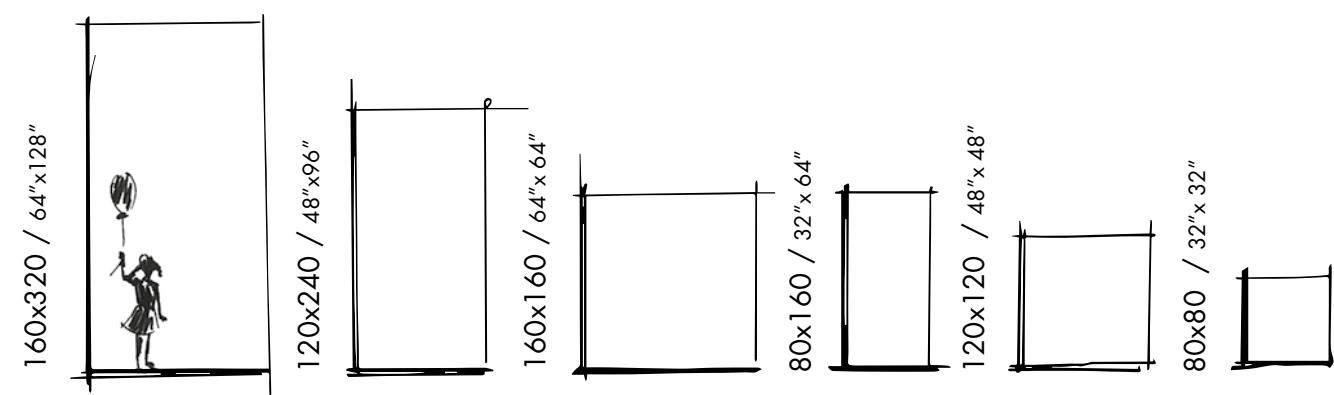
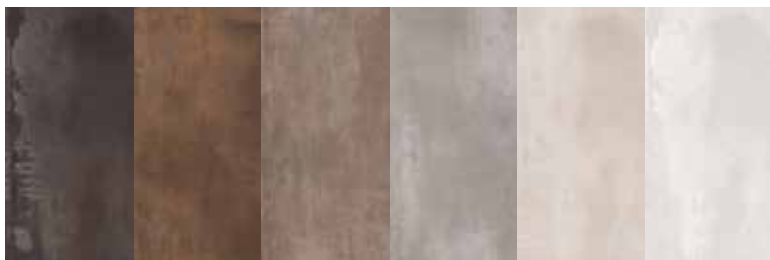
Imagine a contemporary residential complex with a minimalist feel, where the viewer's gaze is drawn to linear structures, harmonious forms, and contrasting textures. Stylish simplicity is paired with the untamed irreverence of weathering steel, which - with a stunning coarseness - becomes a key feature of the landscape. Shipyard is complemented by the new WIDE series of large sizes in a thickness of just 7 mm.



SHIPYARD



night rust guound silver sand white



night rust silver white



Wide is a new collection of 7 mm thick ceramic slabs produced using CONTINUA+ technology. Thanks to their small thickness and large size, these slabs are ideal for use in large residential and commercial spaces, including architectural volumes designed for custom applications.

SHIPYARD

Fusion

METAL
 STONE
 MARBLE
 WOOD

The many inspirations behind the range can be used to customise any space and create constantly changing material effects. Metal, stone, marble and wood are skilfully combined to create a surprising crossover style ideal for highly contemporary architectural solutions.

METAL
 +
 STONE



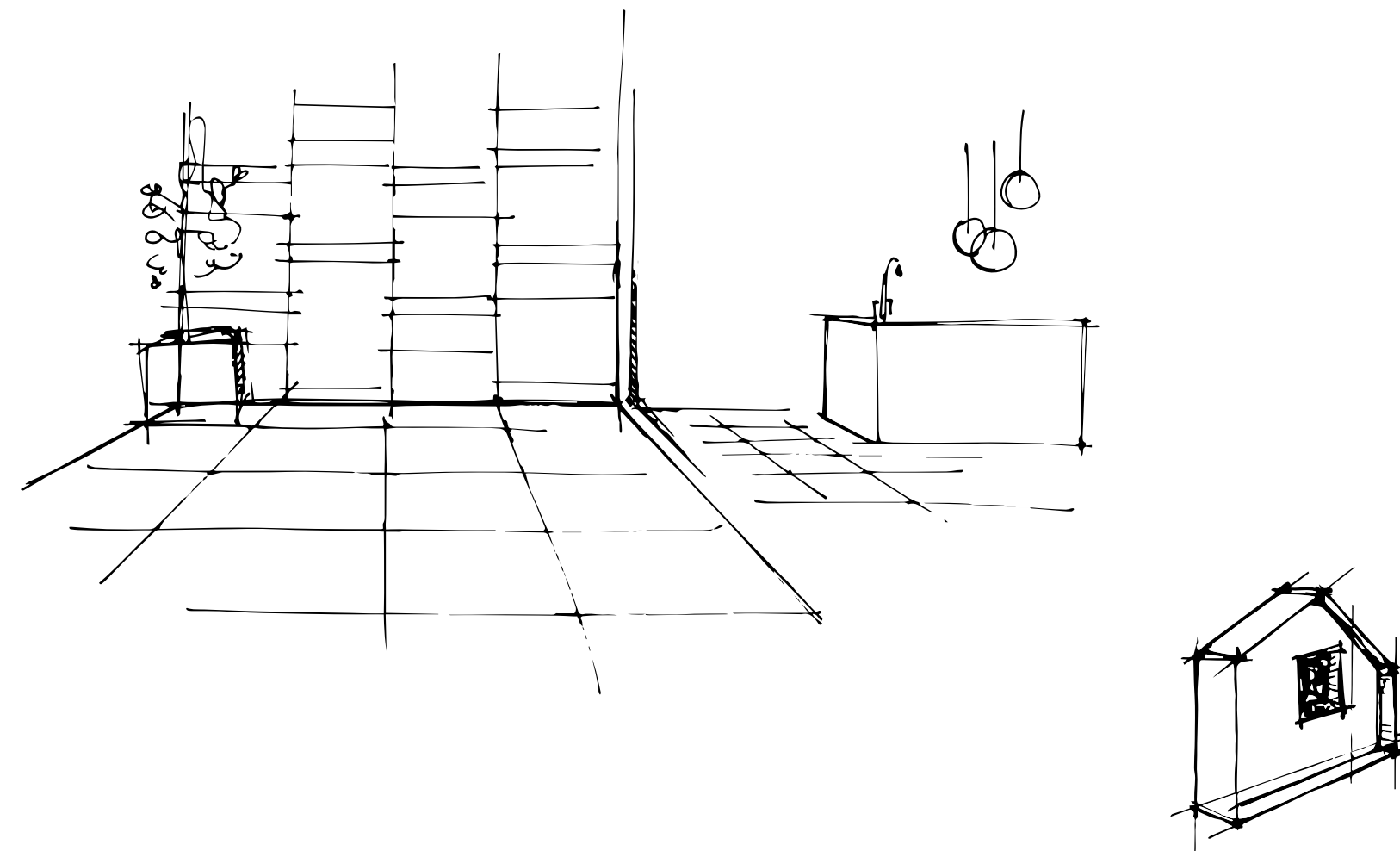
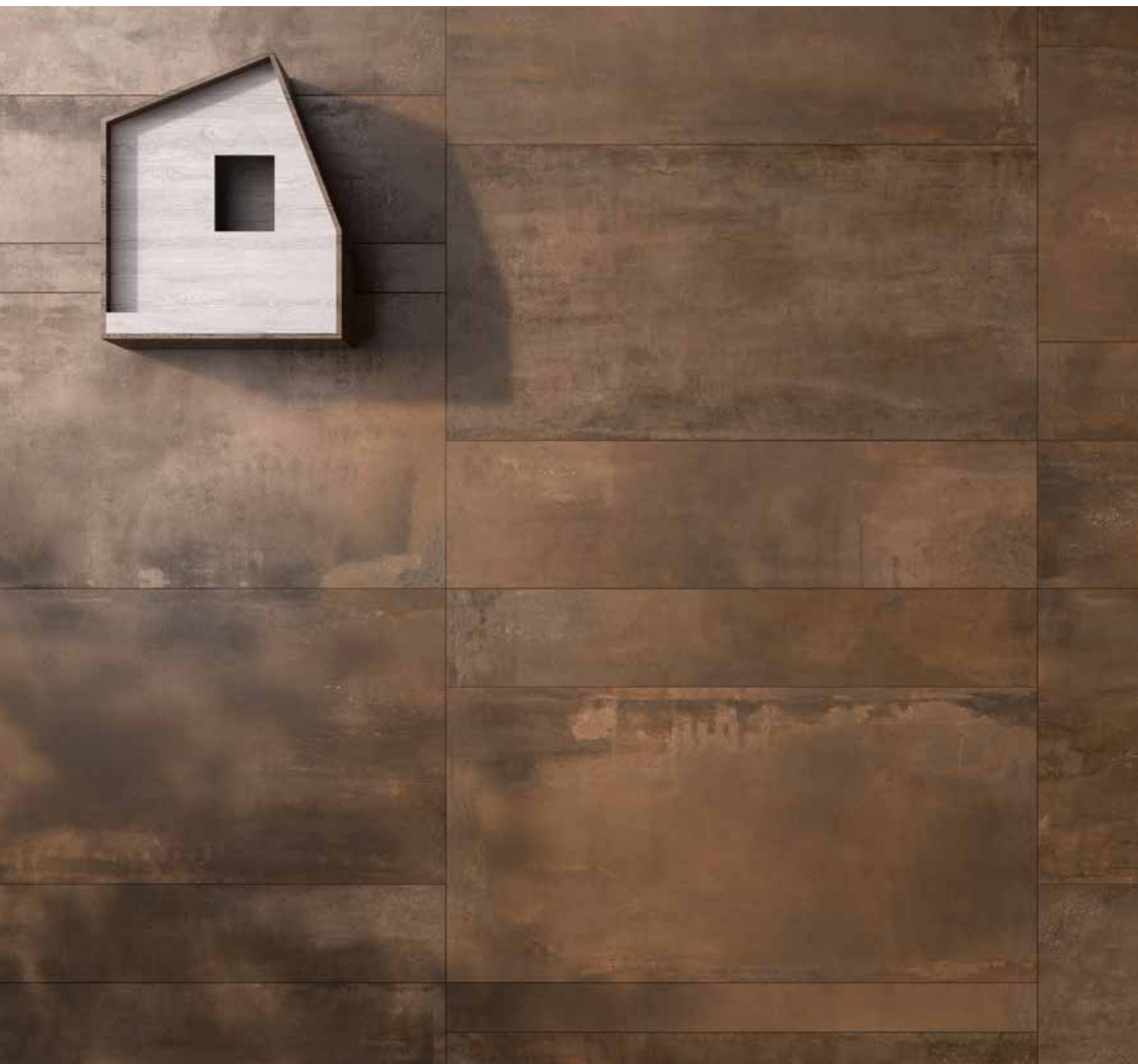
METAL
 +
 MARBLE



METAL
 +
 WOOD



Rust 60x120 - Rust Mix Sizes 60x120

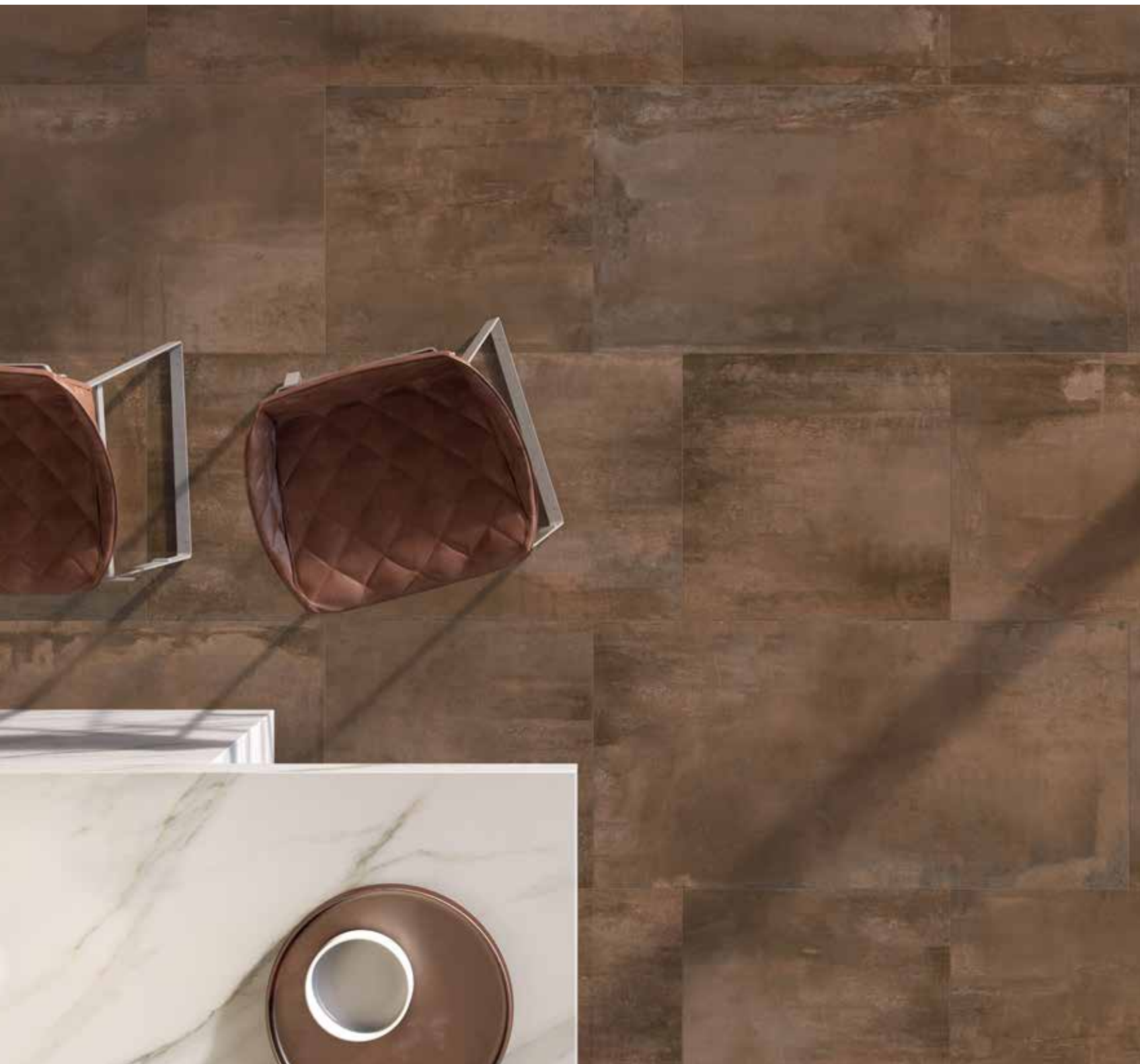


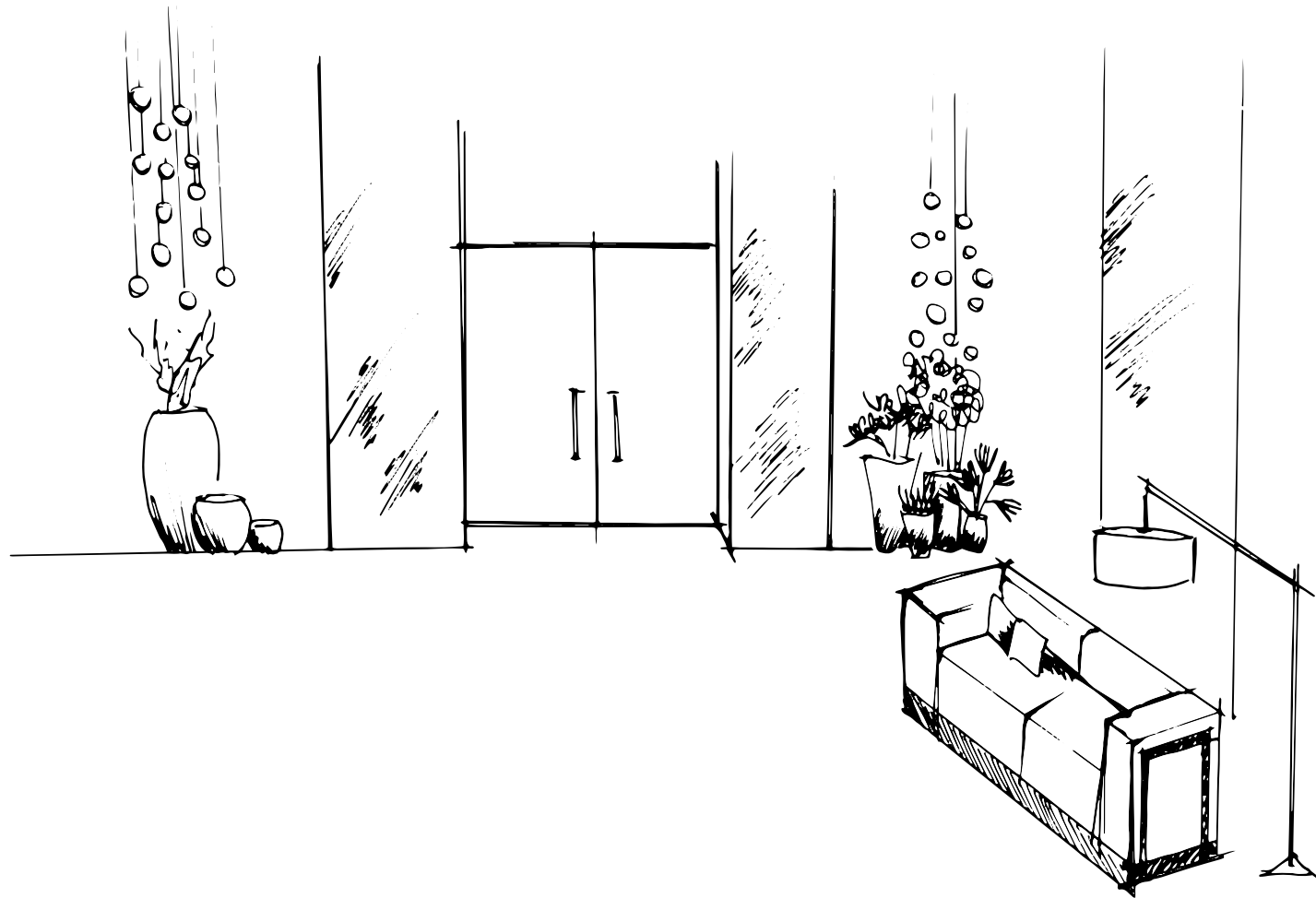
External walls, home: design featuring
a combination of different-sized
rust-effect planks
Team ceramic planks with stone paving
Flowering plant in pot

RUST

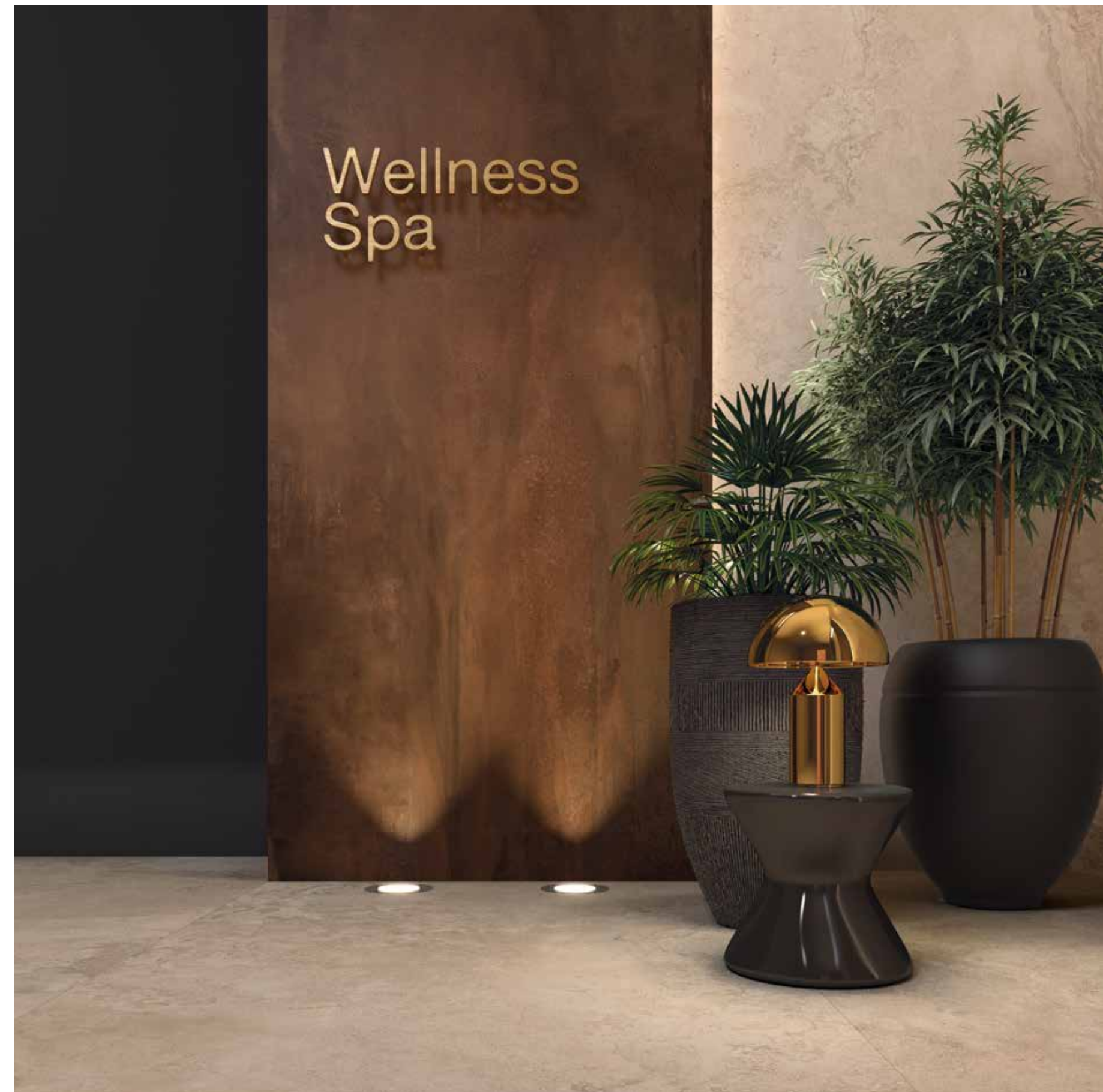


Rust Lapp. 60x120 / 60x60





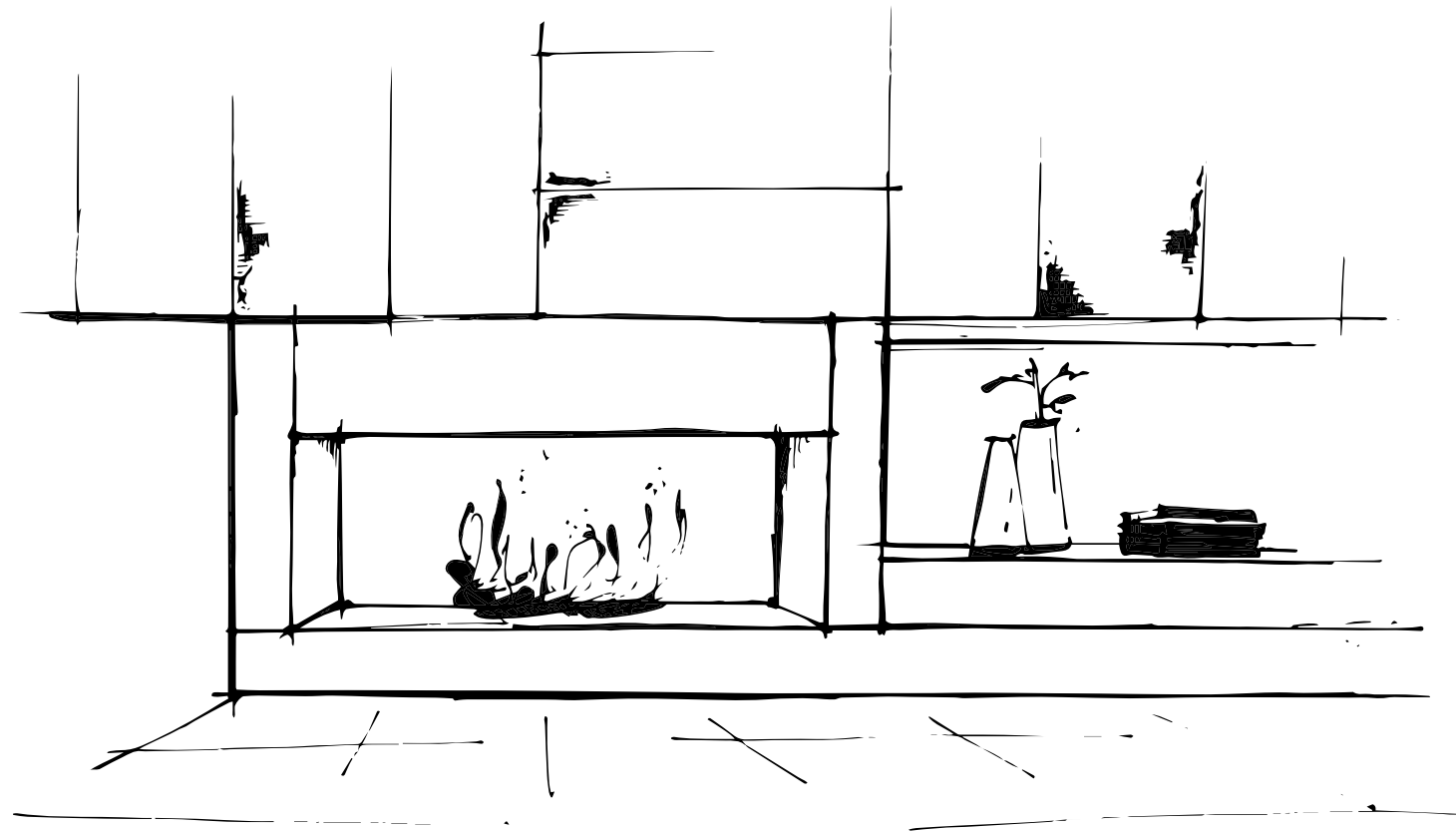
*Elegant hall
contrast between stone
and Corten
large size
lighting from the bottom*





Wellness
Spa

SAND



*Warm, pale tones for the living room floor
provide a stylish contrast with the dark
furnishing and the fireplace feature
Include marble hearth*



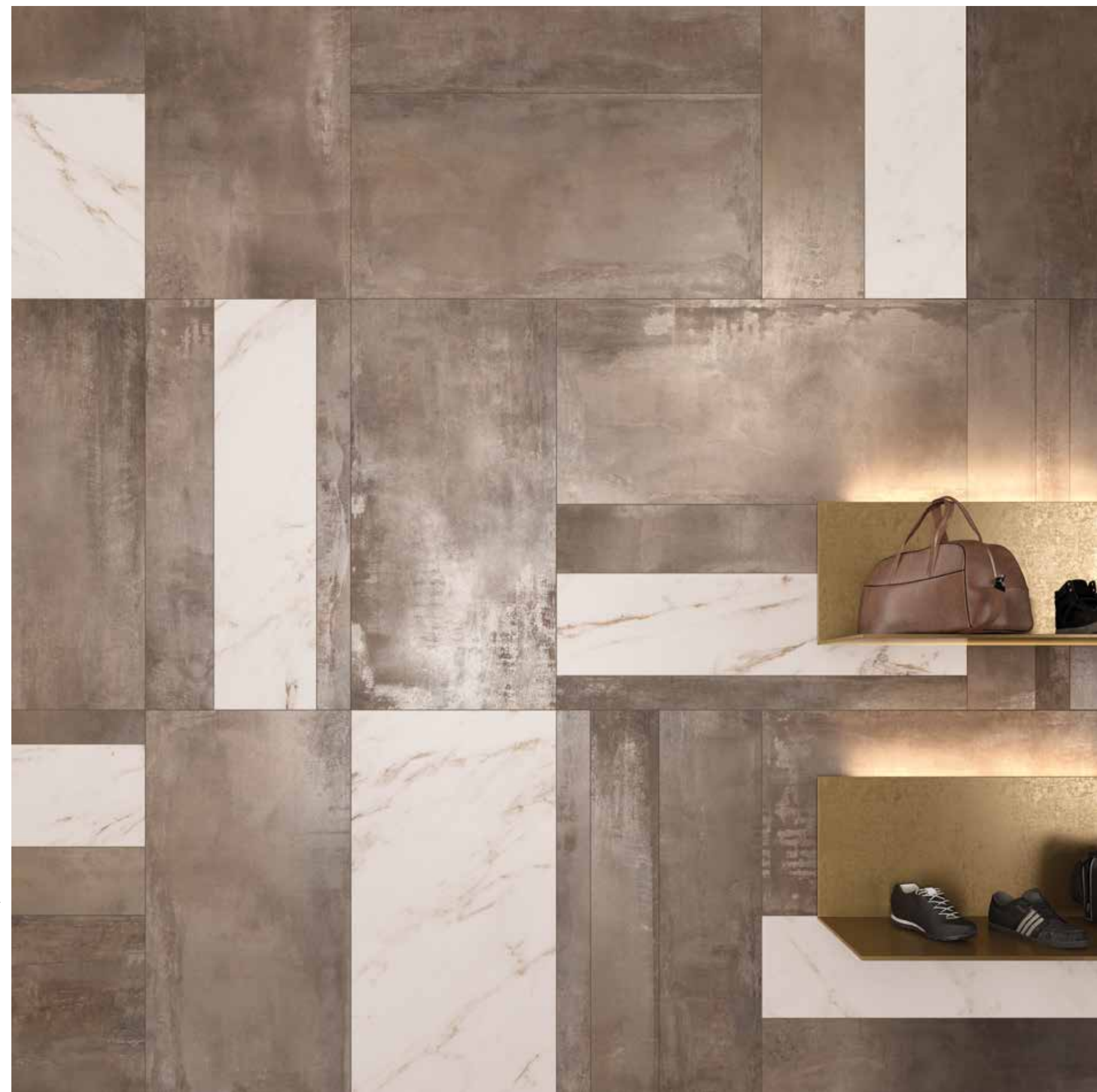
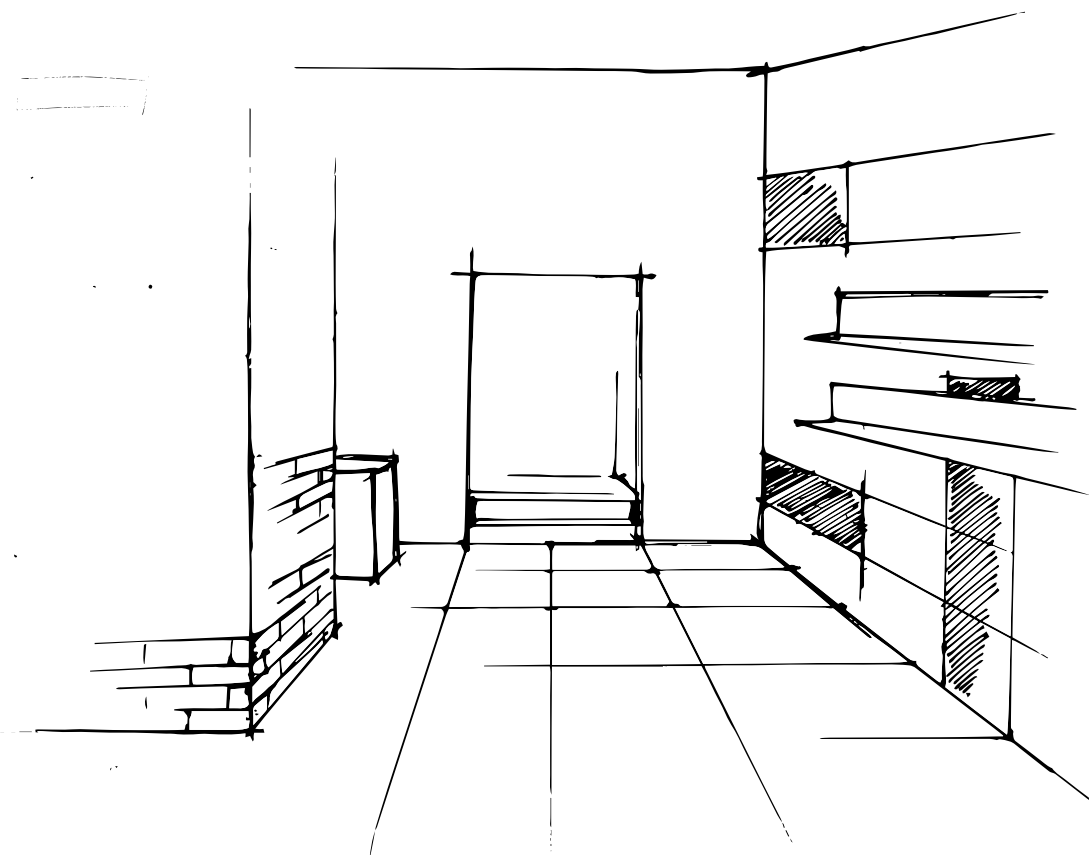
Dune rett. 60x120



GROUND



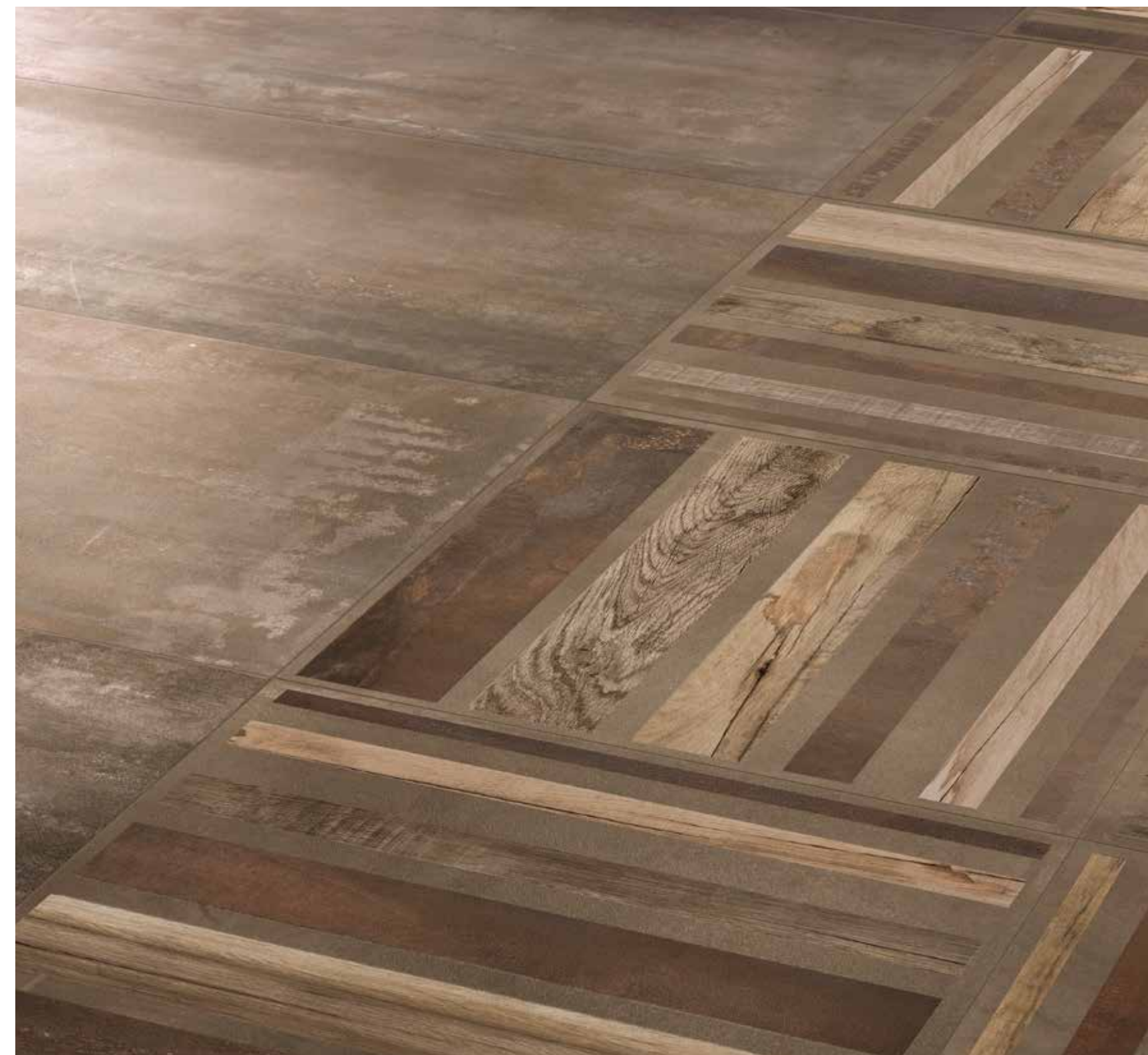
For the showroom, on the first floor,
use black weathering steel-effect slabs on the floor
and 3D dwarf wall effect on the walls.
Display wall: high-impact multi-site
design with the same slabs in warmer tones.
Fit ceramic marble tiles on the walls of the
stairway and on the display wall.
Brass-coloured metal L-shaped shelves
with back-lighting.



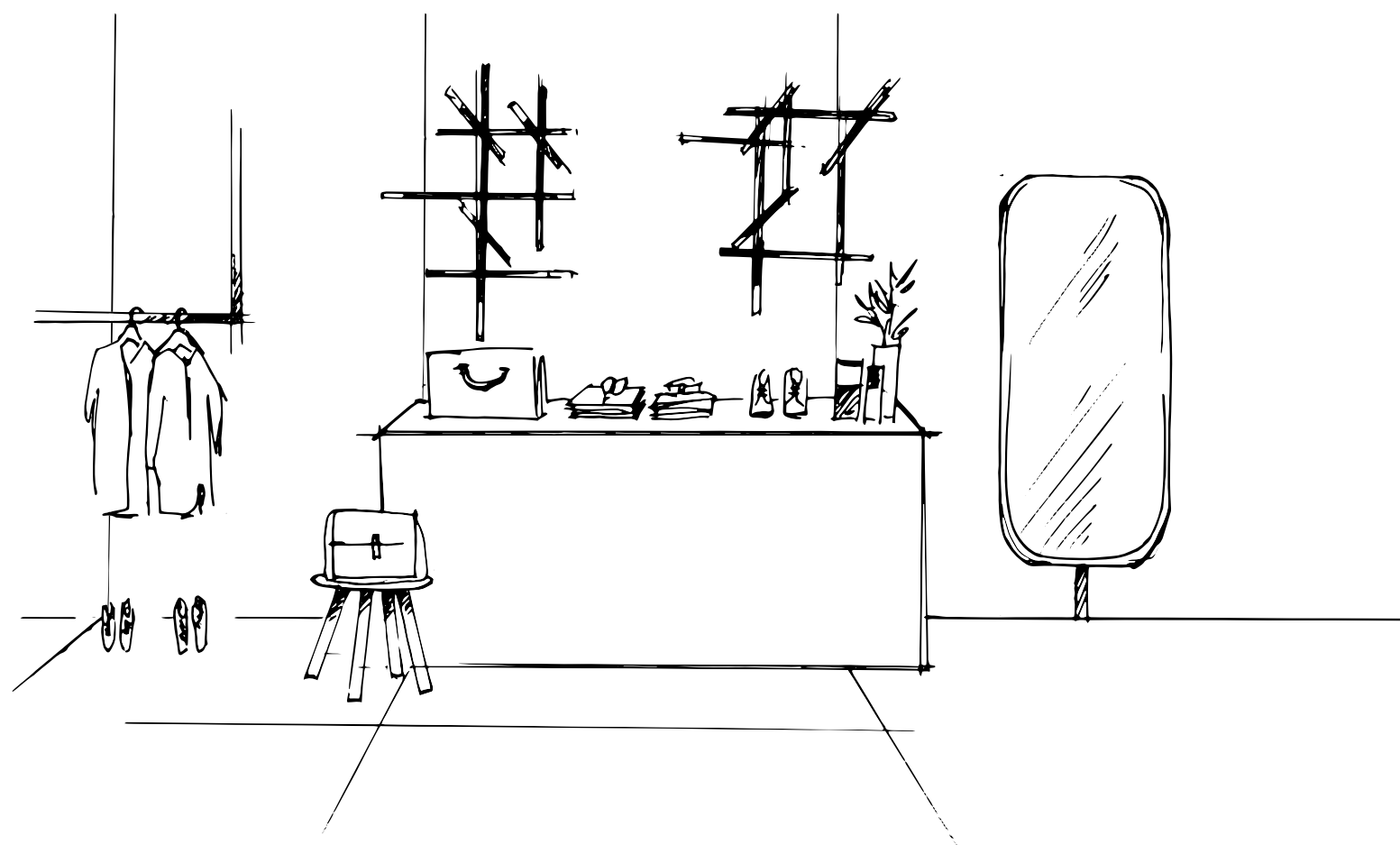


Italian Tile & Stone
tiles.ie

Mud rett. 60x120 - Duo Hot rett. 60x60

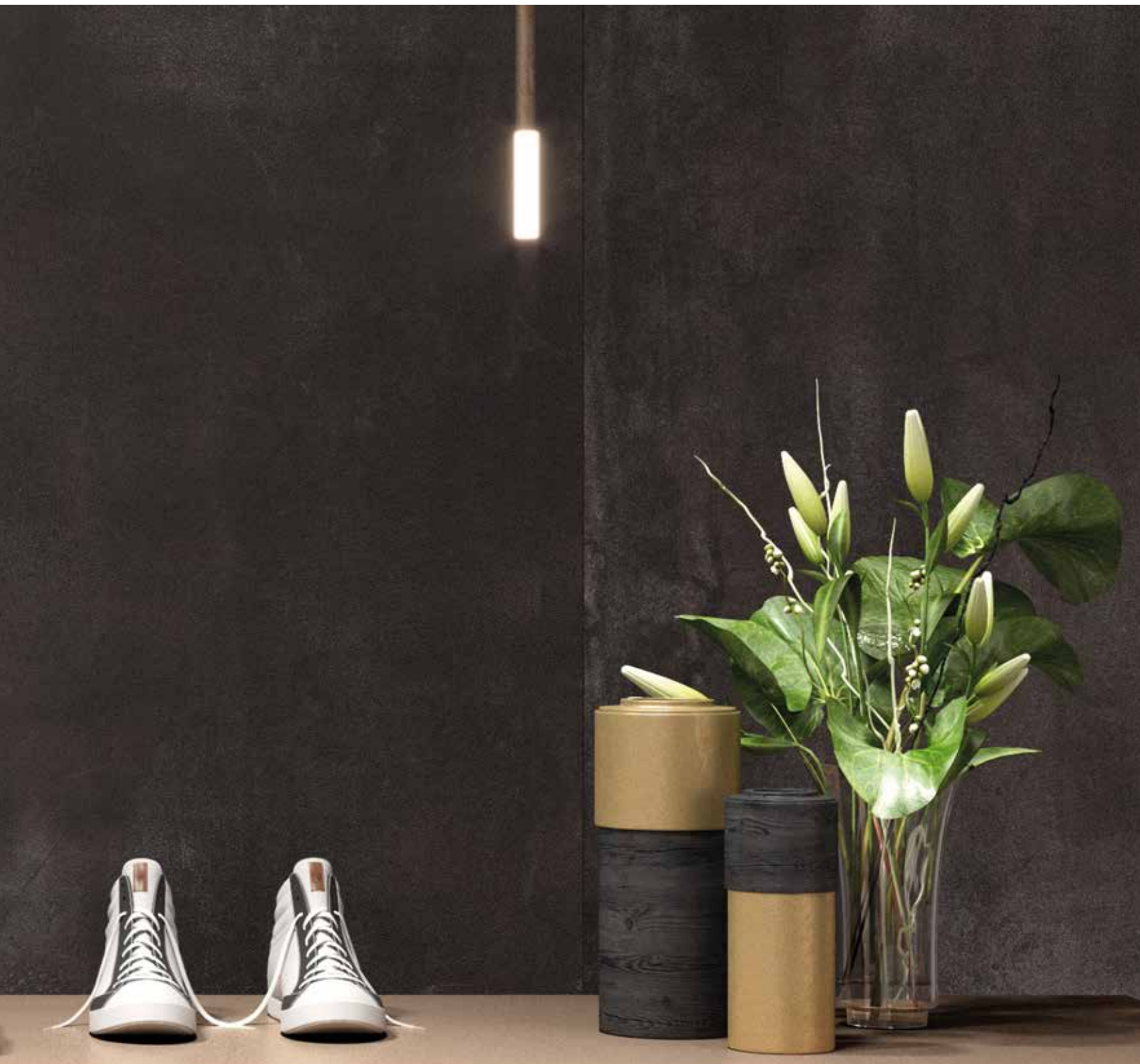


NIGHT



Dark rett. 160x320 - 160x160

Dark rett. 160x320 - 160x160



Dark rett. 60x120 - Mud Lapp. rett. 60x120



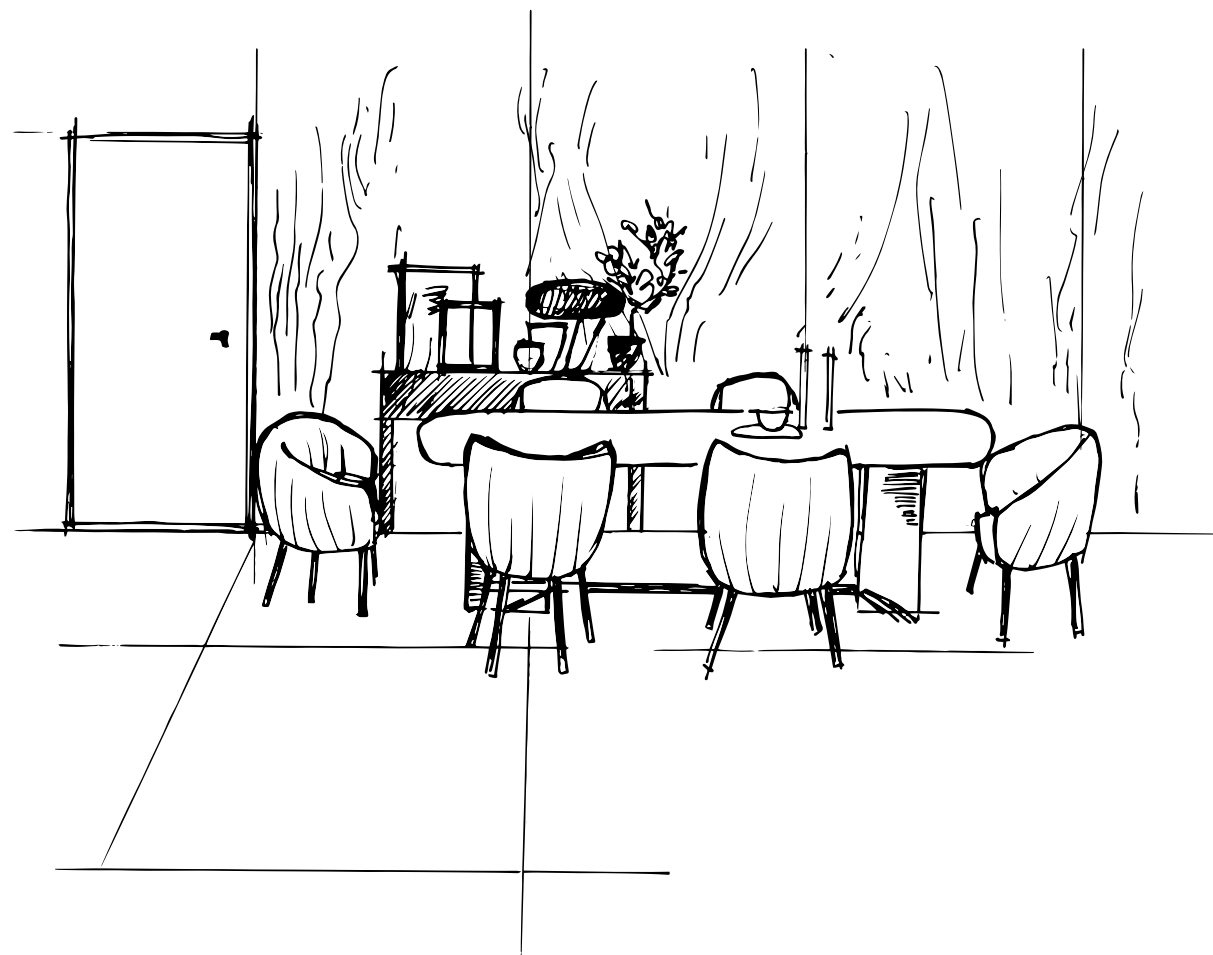
Dark rett. 60x120 - Gradone Top Dark rett. - Sensi Calacatta Select Sablè rett. 60x120



Mud rett. 60x120 - Dark rett. 60x120 - Mix Sizes rett. 60x120 - Sensi Calacatta Select Sablè rett. 60x120 / 30x120 - Do Up Street Black 60x120

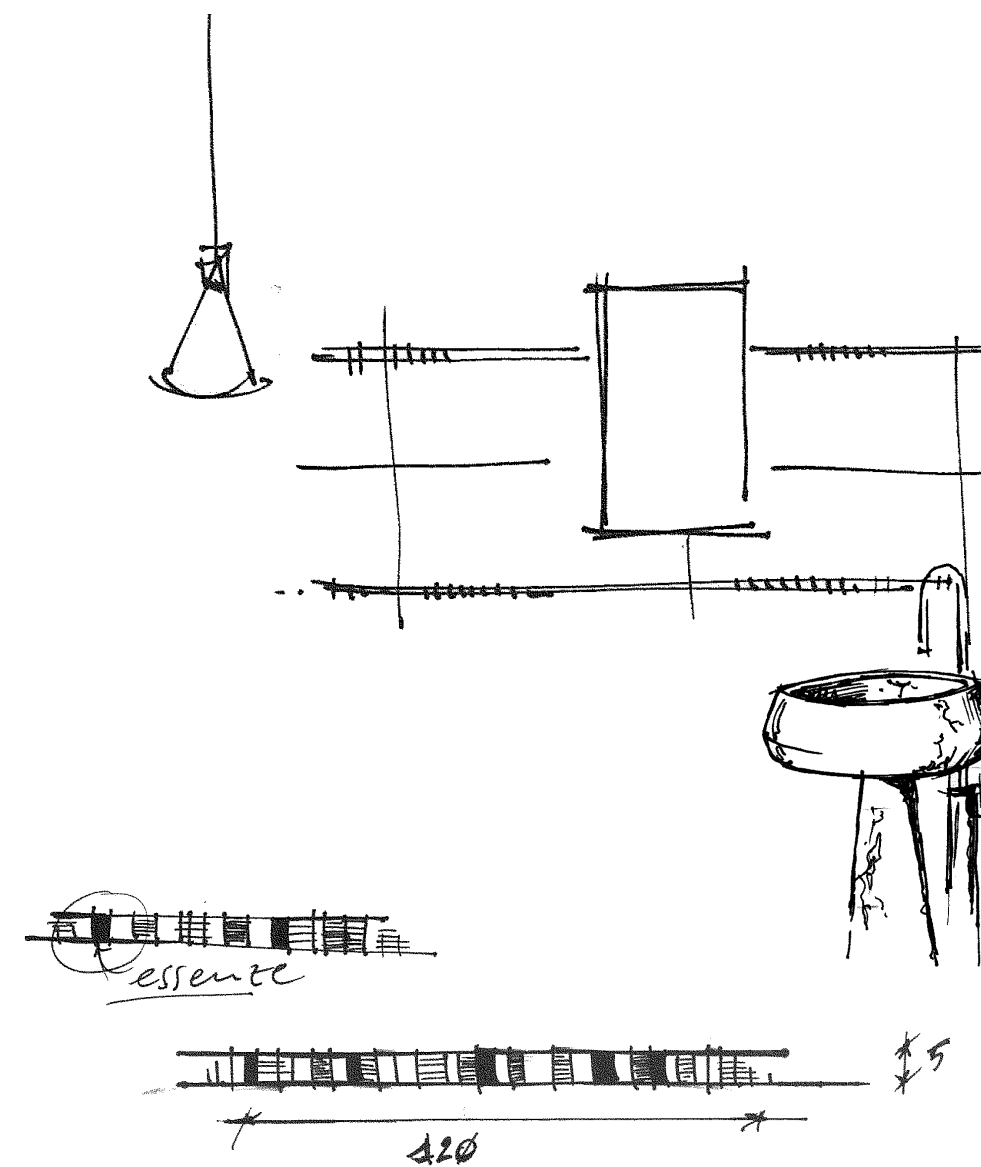
WHITE

Elegant bright living room
regular laying floor
square size 120x120
light color walls





Pearl rett. 30x120 - Fascia Essenze mix 5x30



Team wood with pale ceramic tiling
Combine with dark marble bathroom
furnishings with soft lines
Brass mixer taps

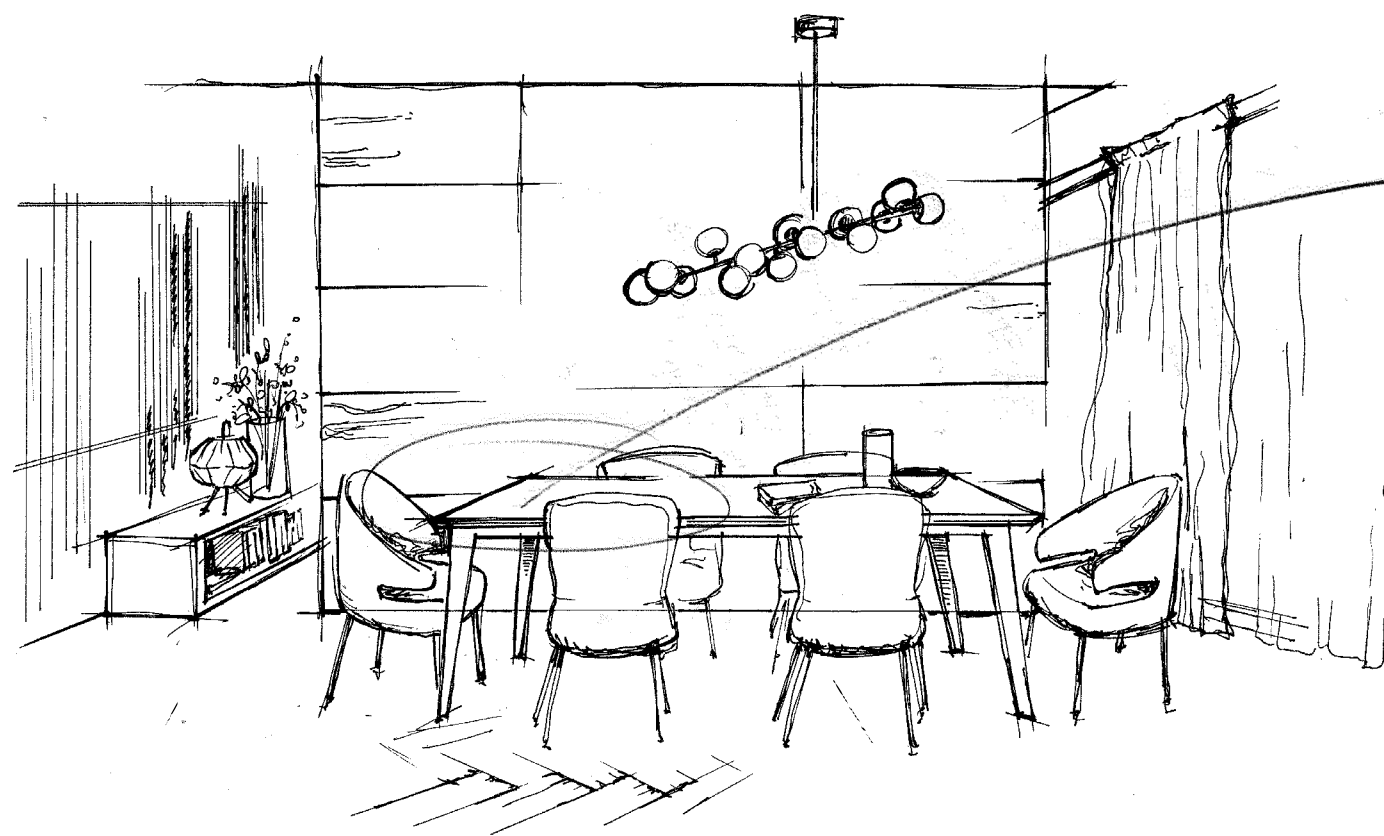
Silver rett. 60x60



Pearl rett. 60x120


~~~~~

Stylish elegance; pearl-effect floor slabs laid  
in herringbone design + high-impact wall  
with marble effect slabs  
(tinted graphics with high visual impact)  
A hint of colour in the seating



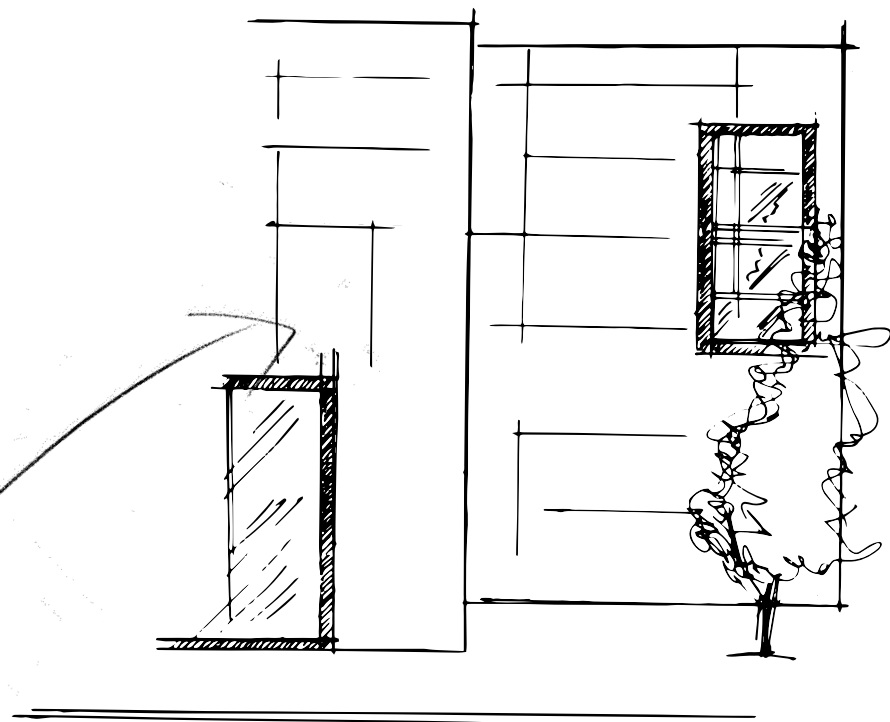
Indoor: Pearl rett. 30x120  
Outdoor: Dolphin Grey Aged rett. 20x120



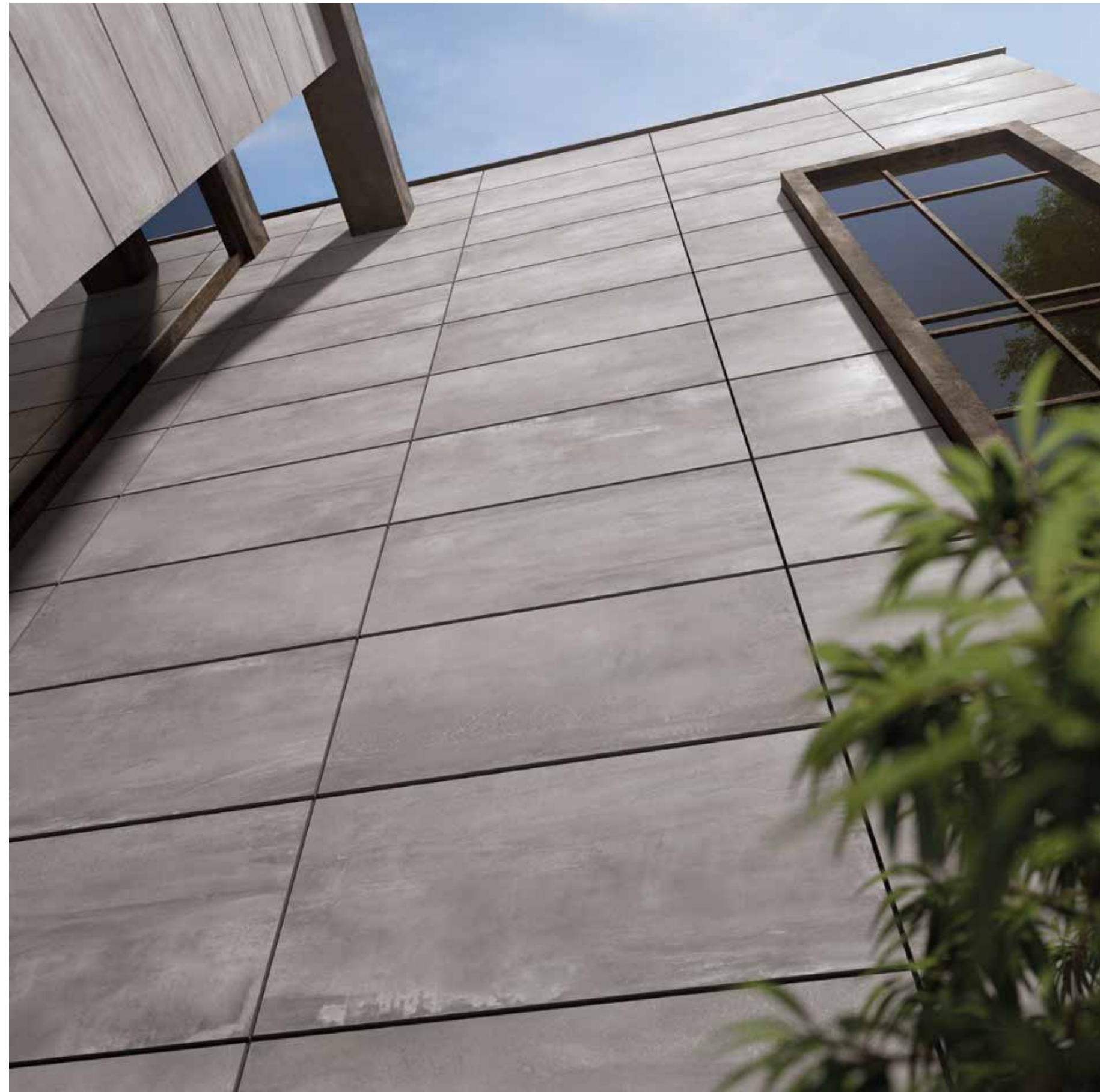




# SILVER



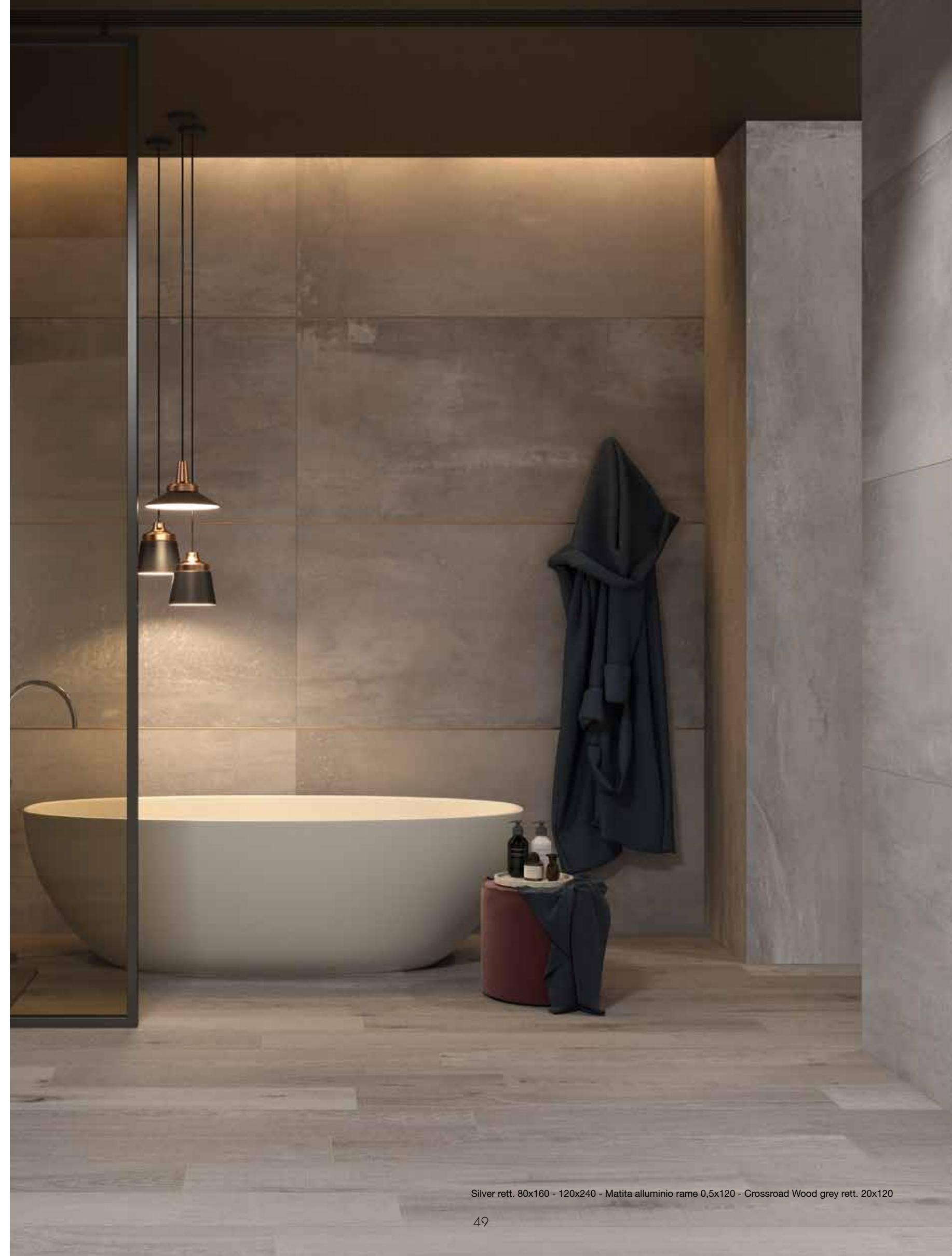
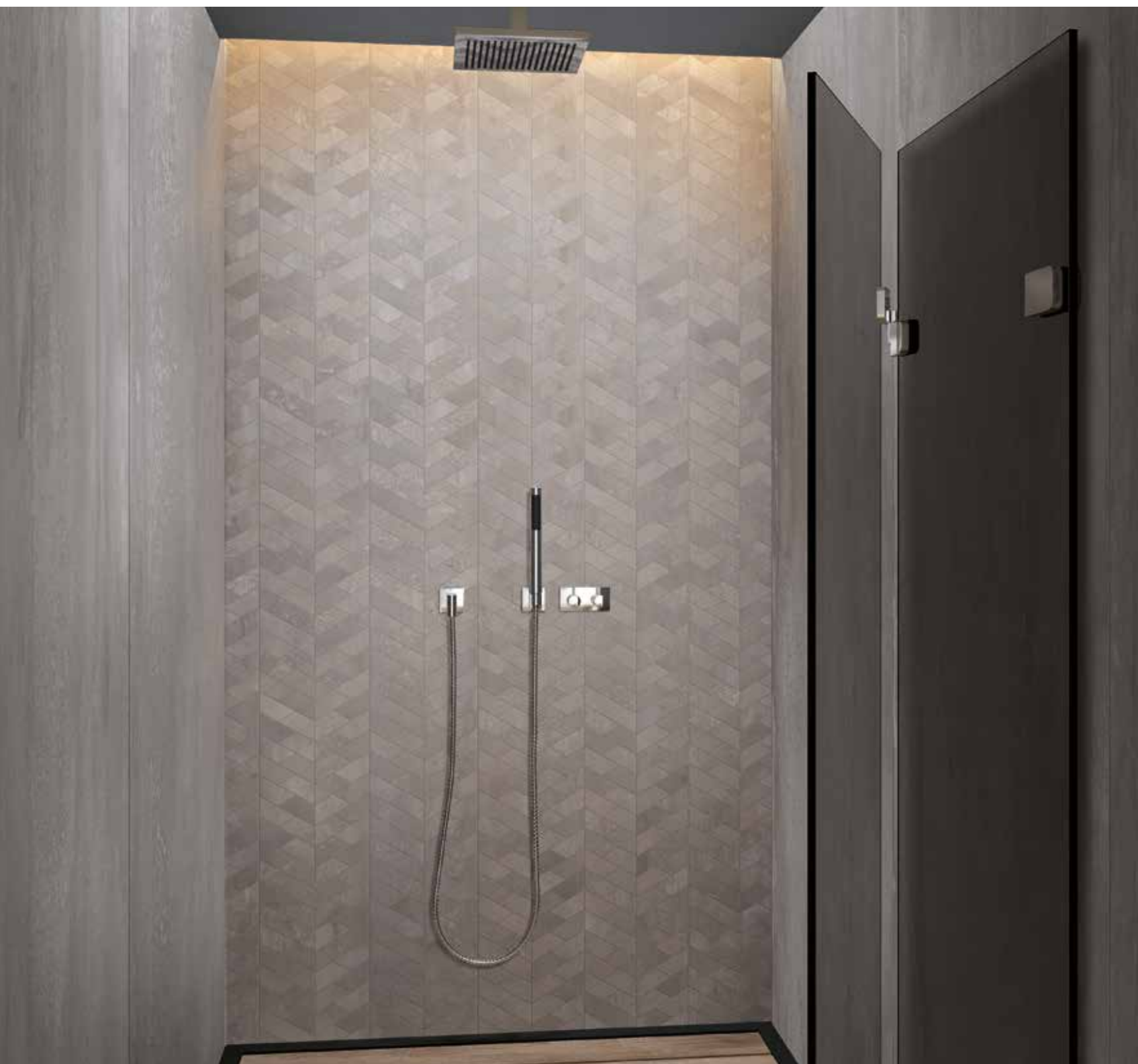
minimal external facade  
silver grey  
window with dark iron structure



Silver rett. 120x240



Silver rett. 120x240 - Mosaico Versus Silver 28x29



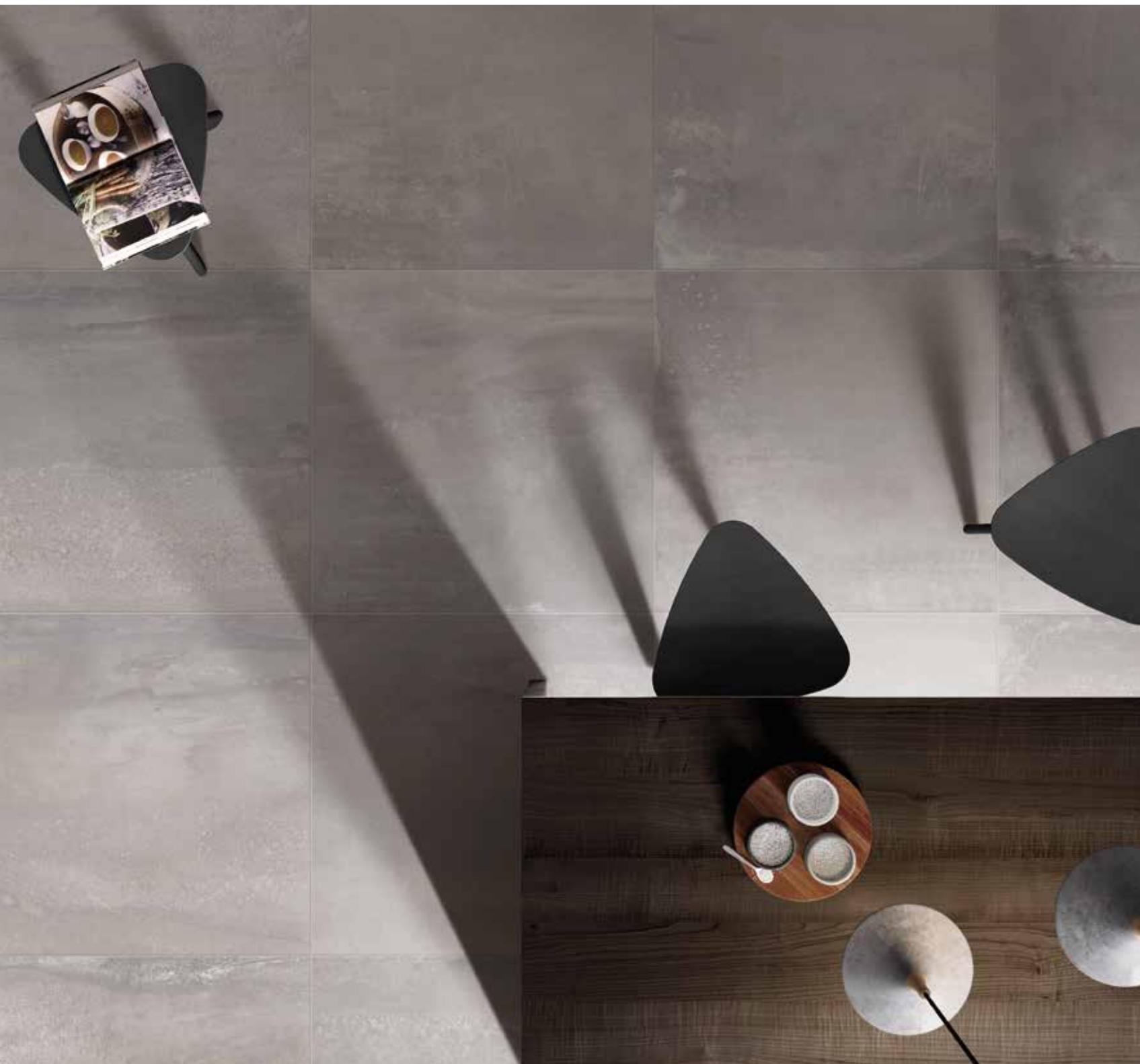
Silver rett. 80x160 - 120x240 - Matita alluminio rame 0,5x120 - Crossroad Wood grey rett. 20x120







Silver rett. 80x80



Silver rett. 30x120 - Fascia Raku Dark mix 2 30x120



RUST

7 mm

160x320 rett.

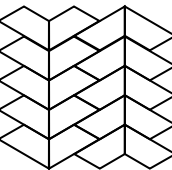
120x240 rett.

160x160 rett.

80x160 rett.

120x120 rett.

80x80 rett.



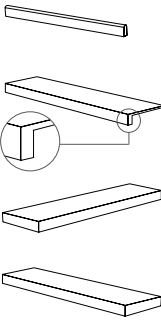
30x29 5  
MOS. VERSUS RUST  
rett.

BATTISCOPA rett.  
5,5x80 8

GRADONE TOP rett.  
32x120x4,5x1,5 1

ANG. TOP SX rett.  
32x120x4,5x1,5 1

ANG. TOP DX rett.  
32x120x4,5x1,5 1



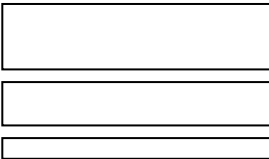
160x320

RUST

9 mm

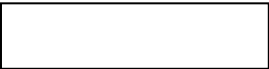


60x120 2  
SHIPYARD RUST



60x120 2  
SHIPYARD RUST

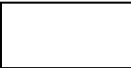
Pcs/box: 30x120 2  
20x120 2  
10x120 2



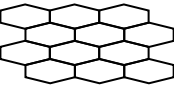
30x120 4  
SHIPYARD RUST



60x60 3  
SHIPYARD RUST



30x60 6  
SHIPYARD RUST



30x60 4  
MOS. LOSANGA RUST



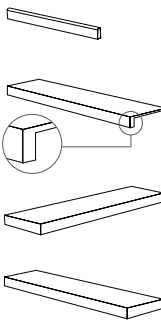
30x30 6  
MOS. QUADRETTI RUST

BATTISCOPA rett.  
5,5x60 10

GRADONE TOP rett.  
32x120x4,5x2 1

ANG. TOP SX rett.  
32x120x4,5x2 1

ANG. TOP DX rett.  
32x120x4,5x2 1



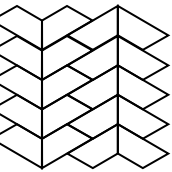
60x120



NIGHT

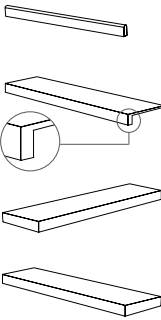
7 mm

|               |
|---------------|
| 160x320 rett. |
| 120x240 rett. |
| 160x160 rett. |
| 80x160 rett.  |
| 120x120 rett. |
| 80x80 rett.   |



30x29 5  
MOS. VERSUS NIGHT

|                                       |
|---------------------------------------|
| BATTISCOPA rett.<br>5,5x80 8          |
| GRADONE TOP rett.<br>32x120x4,5x1,5 1 |
| ANG. TOP SX rett.<br>32x120x4,5x1,5 1 |
| ANG. TOP DX rett.<br>32x120x4,5x1,5 1 |



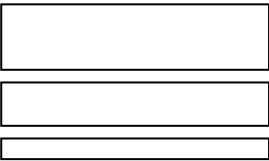
160x320

NIGHT

9 mm



60x120 2  
SHIPYARD NIGHT

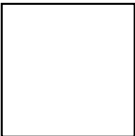


60x120 2  
SHIPYARD NIGHT

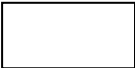
Pcs/box: 30x120 2  
20x120 2  
10x120 2



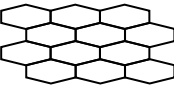
30x120 4  
SHIPYARD NIGHT



60x60 3  
SHIPYARD NIGHT



30x60 6  
SHIPYARD NIGHT

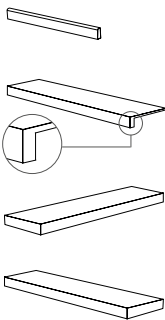


30x60 4  
MOS. LOSANGA NIGHT



30x30 6  
MOS. QUADRETTI NIGHT

|                                     |
|-------------------------------------|
| BATTISCOPA rett.<br>5,5x60 10       |
| GRADONE TOP rett.<br>32x120x4,5x2 1 |
| ANG. TOP SX rett.<br>32x120x4,5x2 1 |
| ANG. TOP DX rett.<br>32x120x4,5x2 1 |



30x120



SILVER

7 mm

160x320 rett.

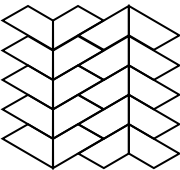
120x240 rett.

160x160 rett.

80x160 rett.

120x120 rett.

80x80 rett.



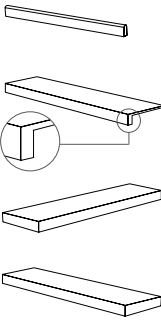
30x29 5  
MOS. VERSUS SILVER

BATTISCOPA rett.  
5,5x80 8

GRADONE TOP rett.  
32x120x4,5x1,5 1

ANG. TOP SX rett.  
32x120x4,5x1,5 1

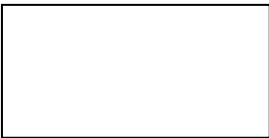
ANG. TOP DX rett.  
32x120x4,5x1,5 1



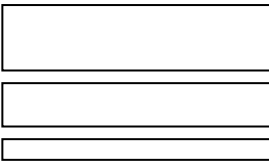
160x320

SILVER

9 mm

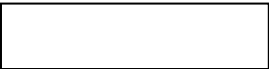


60x120 2  
SHIPYARD SILVER



60x120 2  
SHIPYARD SILVER

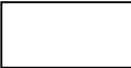
Pcs/box: 30x120 2  
20x120 2  
10x120 2



30x120 4  
SHIPYARD SILVER



60x60 3  
SHIPYARD SILVER



30x60 6  
SHIPYARD SILVER



30x60 4  
MOS. LOSANGA SILVER



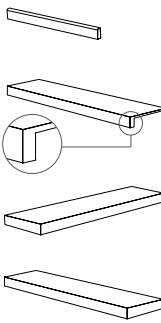
30x30 6  
MOS. QUADRETTI SILVER

BATTISCOPA rett.  
5,5x60 10

GRADONE TOP rett.  
32x120x4,5x2 1

ANG. TOP SX rett.  
32x120x4,5x2 1

ANG. TOP DX rett.  
32x120x4,5x2 1



60x120



WHITE

7 mm

160x320 rett.

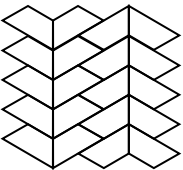
120x240 rett.

160x160 rett.

80x160 rett.

120x120 rett.

80x80 rett.



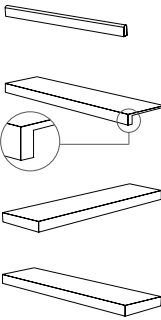
30x29 5 MOS. VERSUS WHITE

BATTISCOPA rett.  
5,5x80 8

GRADONE TOP rett.  
32x120x4,5x1,5 1

ANG. TOP SX rett.  
32x120x4,5x1,5 1

ANG. TOP DX rett.  
32x120x4,5x1,5 1

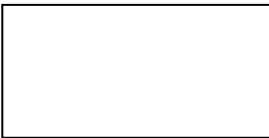


160x320

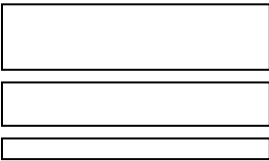


WHITE

9 mm

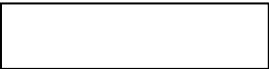


60x120 2 SHIPYARD WHITE

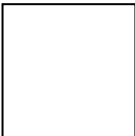


60x120 2 SHIPYARD WHITE

Pcs/box: 30x120 2  
20x120 2  
10x120 2



30x120 4 SHIPYARD WHITE



60x60 3 SHIPYARD WHITE



30x60 6 SHIPYARD WHITE



30x60 4 MOS. LOSANGA WHITE



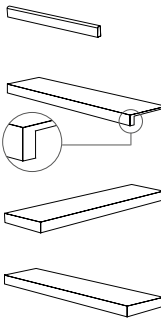
30x30 6 MOS. QUADRETTI WHITE

BATTISCOPA rett.  
5,5x60 10

GRADONE TOP rett.  
32x120x4,5x2 1

ANG. TOP SX rett.  
32x120x4,5x2 1

ANG. TOP DX rett.  
32x120x4,5x2 1



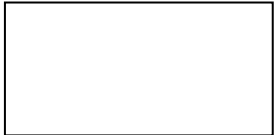
60x60



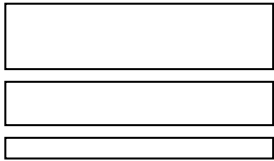


GROUND

▼  
9 mm  
▲

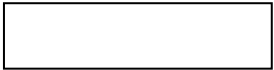


60x120 2  
SHIPYARD GROUND

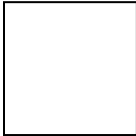


60x120 2  
SHIPYARD GROUND

Pcs/box: 30x120 2  
20x120 2  
10x120 2



30x120 4  
SHIPYARD GROUND



60x60 3  
SHIPYARD GROUND



30x60 6  
SHIPYARD GROUND



30x60 4  
MOS. LOSANGA GROUND



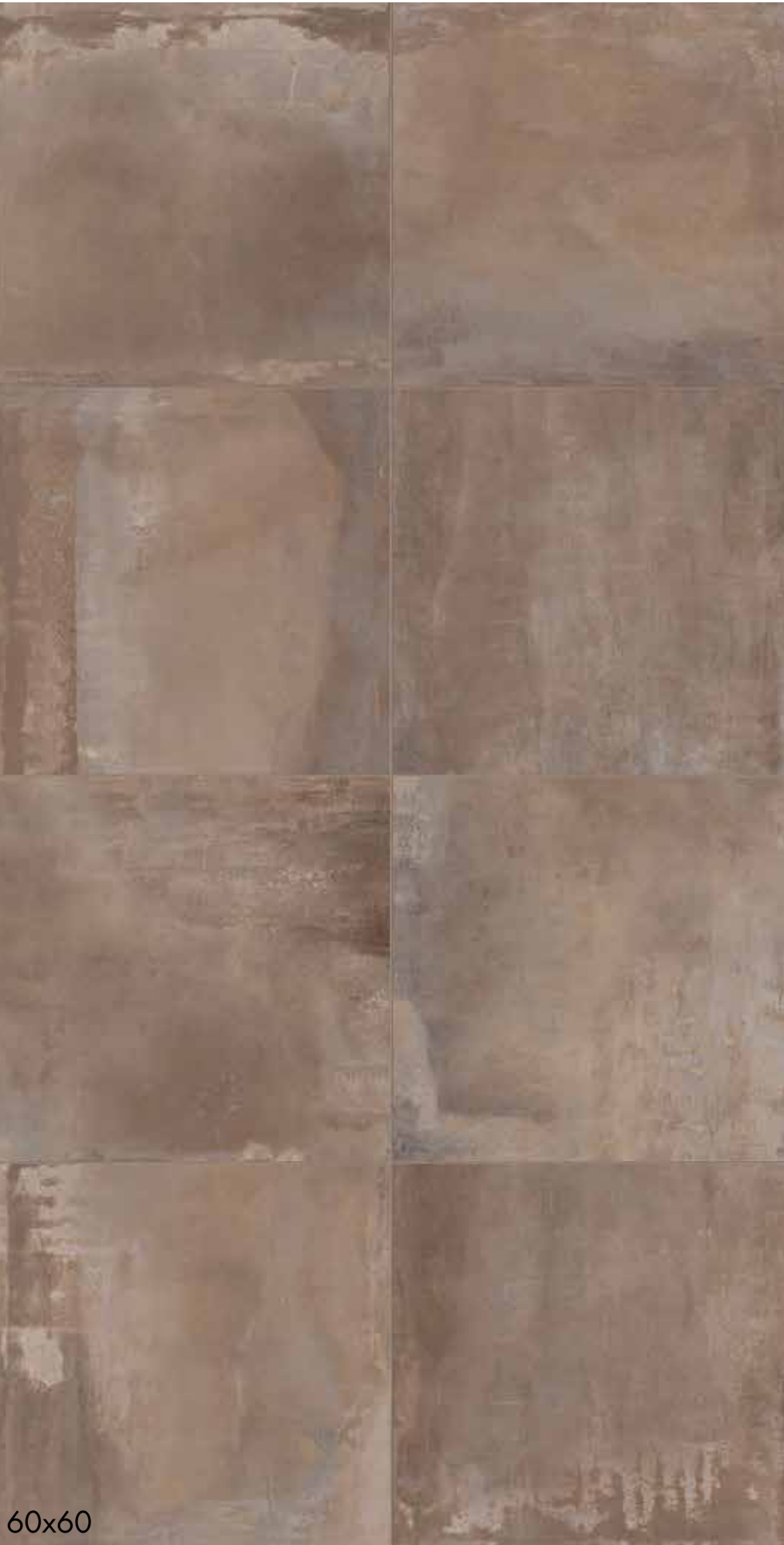
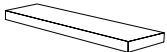
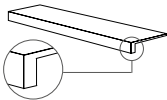
30x30 6  
MOS. QUADRETTI MUD

BATTISCOPA rett.  
5,5x60 10

GRADONE TOP rett.  
32x120x4,5x2 1

ANG. TOP SX rett.  
32x120x4,5x2 1

ANG. TOP DX rett.  
32x120x4,5x2 1



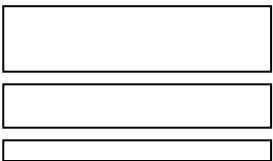
60x60

SAND

▼  
9 mm  
▲



60x120 2  
SHIPYARD SAND



60x120 2  
SHIPYARD SAND

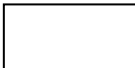
Pcs/box: 30x120 2  
20x120 2  
10x120 2



30x120 4  
SHIPYARD SAND



60x60 3  
SHIPYARD SAND



30x60 6  
SHIPYARD SAND



30x60 4  
MOS. LOSANGA SAND



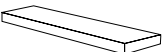
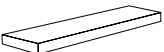
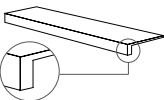
30x30 6  
MOS. QUADRETTI SAND

BATTISCOPA rett.  
5,5x60 10

GRADONE TOP rett.  
32x120x4,5x2 1

ANG. TOP SX rett.  
32x120x4,5x2 1

ANG. TOP DX rett.  
32x120x4,5x2 1



30x60

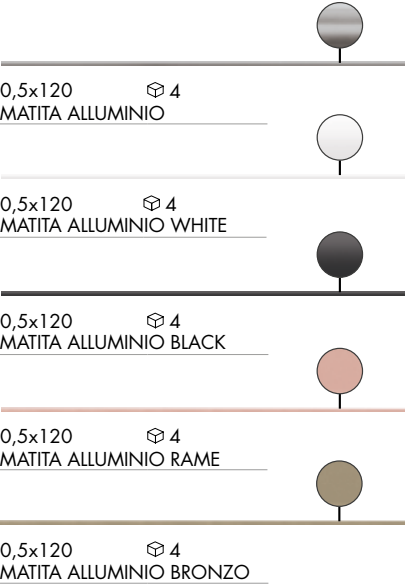


SPECIAL TRIMS

|                                                                                     |                                     |  |  |  |  |  |  |
|-------------------------------------------------------------------------------------|-------------------------------------|-------------------------------------------------------------------------------------|-------------------------------------------------------------------------------------|-------------------------------------------------------------------------------------|--------------------------------------------------------------------------------------|---------------------------------------------------------------------------------------|---------------------------------------------------------------------------------------|
|                                                                                     |                                     | RUST                                                                                | GROUND                                                                              | SAND                                                                                | NIGHT                                                                                | SILVER                                                                                | WHITE                                                                                 |
|  | BATTISCOPA rett.<br>5,5x60 10       | -                                                                                   | -                                                                                   | -                                                                                   | -                                                                                    | -                                                                                     | -                                                                                     |
|  | GRADONE TOP rett.<br>32x120x4,5x2 1 | -                                                                                   | -                                                                                   | -                                                                                   | -                                                                                    | -                                                                                     | -                                                                                     |
|  | ANGOLARE TOP SX<br>32x120x4,5x2 1   | -                                                                                   | -                                                                                   | -                                                                                   | -                                                                                    | -                                                                                     | -                                                                                     |
|                                                                                     | ANGOLARE TOP DX<br>32x120x4,5x2 1   | -                                                                                   | -                                                                                   | -                                                                                   | -                                                                                    | -                                                                                     | -                                                                                     |



WALL COORDINATED DECORS



Aluminium strip for use between wall tiles of different thicknesses (9 mm / 7 mm)

\* Decorative tile made in treated wood, guaranteed also for use in the bathroom. This kind of varnish protects from humidity, therefore it's possible filling with standard epossidic filler for ceramics. After placing and filling, please clean whitth water as soon as possible, carefully removing every mark left by the filler.



PACKAGING



| Nominal size                    | Work size (mm) | Thickness | Type of packing       | Pcs/Packing | Pcs/Box | Sqm/Box | Kg/Box | Box/Packing | Sqm total | Kg/Packing | Kg total |
|---------------------------------|----------------|-----------|-----------------------|-------------|---------|---------|--------|-------------|-----------|------------|----------|
| 160x320 rett.<br>64"x128" rett. | 1596,5x3195    | 7 mm      | Crate                 | 15          | -       | -       | -      | -           | 76,80     | 139        | 1.483    |
|                                 |                |           | Container Rack pallet | 36          | -       | -       | -      | -           | 184,32    | 180        | 3.406    |
| 120x240 rett.<br>48"x96" rett.  | 1194x2390      | 7 mm      | Rack pallet           | 40          | -       | -       | -      | -           | 115,20    | 100        | 2.116    |
|                                 |                |           | Crate                 | 20          | -       | -       | -      | -           | 57,60     | 100        | 1.108    |
|                                 |                |           | Container Rack pallet | 40          | -       | -       | -      | -           | 115,20    | 115        | 2.131    |
| 160x160 rett.<br>64"x64" rett.  | 1596,5x1596,5  | 7 mm      | Crate                 | 15          | -       | -       | -      | -           | 38,40     | 75         | 747      |
|                                 |                |           | Crate                 | 30          | -       | -       | -      | -           | 76,80     | 139        | 1.483    |
|                                 |                |           | Container Rack pallet | 36          | -       | -       | -      | -           | 92,16     | 95         | 1.708    |
| 80x160 rett.<br>32"x64" rett.   | 797,25x1596,5  | 7 mm      | Rack pallet           | 56          | 2       | 2,56    | 44,80  | 28          | 71,68     | 70         | 1.325    |
|                                 |                |           | Pallet with sides     | 56          | 2       | 2,56    | 44,80  | 28          | 71,68     | 40         | 1.295    |
| 120x120 rett.<br>48"x48" rett.  | 1194x1194      | 7 mm      | Rack pallet           | 56          | 2       | 2,88    | 50,40  | 28          | 80,64     | 70         | 1.481    |
|                                 |                |           | Pallet with sides     | 44          | 2       | 2,88    | 50,40  | 28          | 80,64     | 70         | 1.481    |
| 80x80 rett.<br>32"x32" rett.    | 797,25x797,25  | 7 mm      | Pallet                | 120         | 3       | 1,92    | 33,60  | 40          | 76,80     | 15         | 1.359    |



| Nominal size           | Work size (mm) | Thickness | Pcs/Box | Sqm/Box | Kg/Box | Box/Packing | Sqm total | Kg total |
|------------------------|----------------|-----------|---------|---------|--------|-------------|-----------|----------|
| 60x120 / 24"x48" rett. | 596x1194       | 9 mm      | 2       | 1,44    | 27,20  | 26          | 37,44     | 748      |
| 60x120 / 24"x48" lapp. | 596x1194       | 9 mm      | 2       | 1,44    | 27,20  | 30          | 43,20     | 831      |
| 60x120 mix sizes       | 596x1194       | 9 mm      | 2       | 1,44    | 27,20  | 26          | 37,44     | 748      |
| 30x120 / 12"x48" rett. | 297x1194       | 9 mm      | 4       | 1,44    | 27,20  | 18          | 25,92     | 509      |
| 60x60 / 24"x24" rett.  | 596x596        | 9 mm      | 3       | 1,08    | 21,20  | 40          | 43,20     | 868      |
| 30x60 / 12"x24" rett.  | 297x596        | 9 mm      | 6       | 1,08    | 21,20  | 40          | 43,20     | 868      |

The minimum sales quantity for all items (plain tiles, decorations and special trims) is one full box.  
Data referring to packaging have been update at time of printing; the actual data may be slightly different.  
Due to working process special trims and decors, may show variation in tonality.



SUPERSIZE SLABS



Italian Tile & Stone  
tiles.ie

CERAMIC R-EVOLUTION

WIDE collection consists of tough yet lightweight porcelain slabs with a thickness of just 7 mm and a record size of 160x320 cm produced using the revolutionary CONTINUA+ technology.The new pressing system involves dry compaction of raw materials and is able to produce surfaces that combine excellent aesthetic quality with outstanding technical performance.



WIDE & STRONG

WIDE is ideal as both a floor and wall covering in residential and commercial projects.The 7 mm thickness enables it to maintain excellent breaking strength in real situations.



LITE GOES WIDE

The 7 mm thickness results in a reduced weight per square metre, bringing significant advantages in terms of ease of working and handling.



WIDE IS LEVELING

The combination of a body with high plasticity, thickness and dimensions makes for a highly elastic product that delivers consistently flawless results.



EASY AS WIDE

The chemical formulation of the body combined with the raw material dry compaction process produces a porcelain slab that is easy to cut and work with.



WIDE MEANS GREEN

As the body contains a minimum of 40% high-quality raw materials recycled from other production processes, WIDE collection products qualify for LEED international certification.

BREAKING STRENGHT

9 mm = 1.662 newton  
7mm = 1.587 newton  
6 mm = 1.166 newton

WEIGHT

9 mm = 19,5 Kg x mq  
7 mm = 17,5 Kg x mq

|                   |                                        |                |          |
|-------------------|----------------------------------------|----------------|----------|
| flexibility index | maximum deflection under load of 350 N | lenght 2400 mm | > 50 mm  |
|                   |                                        | lenght 3200 mm | > 100 mm |

NEW DIMENSIONS

One of the aims of the WIDE project is to supply a hi-tech ceramic material that is easy to use in very different sizes and applications. WIDE comes in a large selection of sizes, all rectified, ideal for uses ranging from residential through to large-scale works in public and commercial spaces.

EVERYWHERE YOU LIKE

Taking account of the material's key qualities, including strength, thermal shock resistance, low thickness and ease of working, the WIDE large-format slabs extend the fields of use of porcelain.The WIDE collection has fewer joints while givingenormous creative freedom to architects and interior designers, who appreciate the versatility of this ceramic surface without limits.



INDOOR FLOORS



INDOOR WALLS



GLUED AND VENTILATED  
EXTERIOR FAÇADES



OUTDOOR FLOORS



KITCHEN COUNTERTOPS







BATHROOM VANITY TOPS  
AND SHELVES



INTERIOR FURNISHING  
AND DESIGN ELEMENTS

TECHNICAL FEATURES

CLASSIFICATION IN ACCORDANCE WITH UNI EN 14411 (ISO 13006) ANNEX G-Group B Ia

| FULL BODY COLORED PORCELAIN STONEWARE | NORM                   | VALUE PRESCRIBED FROM THE NORMS                                                                                                                                                                                                                                                                                                                                                                                                                                                                              | VALUE<br>Interno 9<br>naturale<br>7/9 mm | VALUE<br>Interno 9<br>lappato<br>9 mm |
|---------------------------------------|------------------------|--------------------------------------------------------------------------------------------------------------------------------------------------------------------------------------------------------------------------------------------------------------------------------------------------------------------------------------------------------------------------------------------------------------------------------------------------------------------------------------------------------------|------------------------------------------|---------------------------------------|
| FROST RESISTANCE                      | UNI EN ISO 10545/12    | REQUIRED                                                                                                                                                                                                                                                                                                                                                                                                                                                                                                     | FROST PROOF                              | FROST PROOF                           |
| DYNAMIC FRICTION COEFFICIENT          | B.C.R.A. C.A.          | $\mu$ 0,19 - DANGEROUSLY SLIPPERY 0,20 < $\mu$ < 0,39 - EXCESSIVELY SLIPPERY 0,40 < $\mu$ < 0,74 - SATISFACTORY GRIP $\mu$ 0,75 - EXCELLENT GRIP                                                                                                                                                                                                                                                                                                                                                             | > 0,40                                   | -                                     |
|                                       | B.C.R.A. G.B.          |                                                                                                                                                                                                                                                                                                                                                                                                                                                                                                              | > 0,40                                   | -                                     |
| COEFFICIENT OF STATIC FRICTION        | ASTM C 1028 (S.C.O.F.) | SLIP RESISTANT (> 0,60)                                                                                                                                                                                                                                                                                                                                                                                                                                                                                      | > 0,60 DRY                               | -                                     |
|                                       |                        |                                                                                                                                                                                                                                                                                                                                                                                                                                                                                                              | > 0,60 WET                               | -                                     |
| NON-SLIP CLASSIFICATION               | DIN 51130              | BASING ON THE ENVIRONMENT OR THE WORKING AREA                                                                                                                                                                                                                                                                                                                                                                                                                                                                | R10                                      | -                                     |
| SLIP RESISTANCE                       | DIN 51097              | -                                                                                                                                                                                                                                                                                                                                                                                                                                                                                                            | A+B                                      | -                                     |
|                                       | ANSI A 137-1:2012      | > 0,42                                                                                                                                                                                                                                                                                                                                                                                                                                                                                                       | > 0,42                                   | -                                     |
| SHADE VARIATION                       | V3                     | <div><div>uniform appearance<br/>V1</div><div>slight variation<br/>V2</div><div>moderate variation<br/>V3</div><div>substantial variation<br/>V4</div></div> |                                          |                                       |

Colour reproduction approximate.





# Italian Tile & Stone

---

## TERENURE SHOWROOM

---

Italian Tile and Stone 56  
Terenure Road North, Dublin,  
D6W AW88  
**T** 01 492 4891  
**E** info@tiles.ie

## COMMERCIAL DIVISION

---

Italian Tile and Stone 56  
Terenure Road North, Dublin,  
D6W AW88  
**T** 01 907 3700  
**E** commercial@tiles.ie

## SWORDS SHOWROOM

---

Italian Tile and Stone  
6 Town Centre Mall, Main Street  
Swords, Co. Dublin, K67 CD86 **T** 01  
840 5057  
**E** swords@tiles.ie

---

[www.tiles.ie](http://www.tiles.ie)